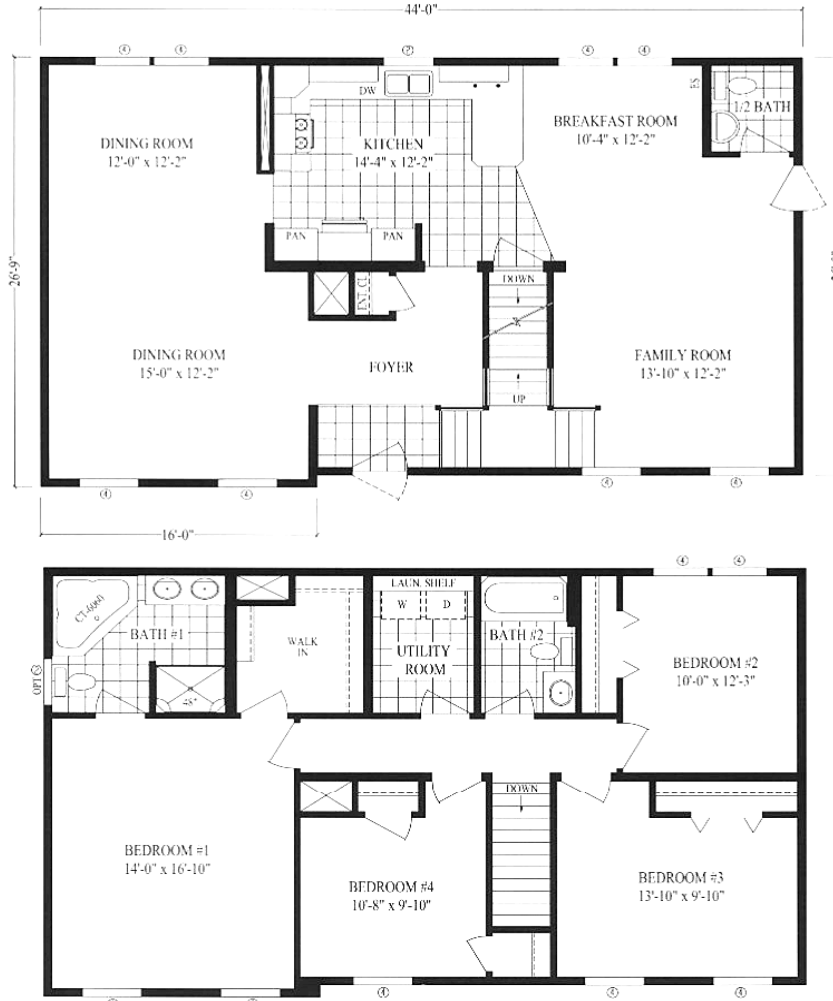




- Crest Winchester Model -
2,312 Sq. Ft
 26' wide x 44' long



Base price - includes base price and set	99,500
Freight	5,500
Surcharge	2,151
Options	15,930
House including options	<u>123,081</u>

Site work estimates:

Basement - 8 ft. poured wall, includes jack posts, sill plate, & waterproofing.	12,800
<i>*Basement price includes insulation in basement to meet new MI energy code.</i>	
Basement Stairs	1,500
Electric Hook-up	3,750
Plumbing Hook-up	3,750
Forced Air Gas Furnace	5,700
Allowance: Well, Septic, Excavating, Permits	<u>12,300</u>
Total house including site work estimates	162,881
<i>Price per Sq. Ft.</i>	<i>\$70 / sq.ft.</i>

24' x 24' attached garage	15,000
6'x10' Front Porch (shown on model)	3,000



Winchester Model Options:

9 Foot Ceiling on the 1 st Floor	875
7/12 Roof Pitch for 50# GSL (includes set fee)	945
Add Closet at Rear Entryway	485
Upgrade Front Door to 9-Lite w/2 Sidelights	580
Add Transom over Front Door	295
Upgrade to Patio Door in Dining Room	180
Upgrade to taller #6 windows on main floor (6 @ \$30)	180
Add (1) #2 Window in Bath #3	205
Add (2) #2 Tempered Windows over corner tub in Bath #1	550
Add 48"x8" Glass Block Window above Tub/shower	380
Add 15' Linoleum in Dining Room and Rear Entryway	285
Add Carpeting (25 oz.)	4,435
Add Double Pocket Doors in Bedroom #1 Suite	660
Add Appliance Package #2 Black (Refrige, Gas Rng, D/W, M/W)	2,060
Add 2 Recessed Lights over snack bar in Kitchen	110
Upgrade to Deep Acrylic Sink in Kitchen	35
Hickory raised-panel cabinets throughout	std
Upgrade to 42" Overhead Cabinets	430
Upgrade to Deluxe Cabinet Trim	345
Gas Fireplace with ext. bump out and half stone front	2,560
PEX plumbing in place of copper	(755)
Print Fees (add closet & reverse swing of Bdrm #4 closet)	200
MI Sales tax on options only (excluding base price & freight)	890
Total Options	15,930